

Highlights

ExtremeCloud IQ Essentials

- Standard features of ExtremeCloud IQ
- Enable enterprise applications with opt-in service within ExtremeCloud IQ
- Included with ExtremeCloud IQ Pilot Subscription
- No additional cost

ExtremeGuest™ Essentials

- Sponsored Access/Self-registration/Social ID/SMS: Multiple onboarding options
- Completely customizable location specific splash pages
- Rich set of analytics providing business insight

ExtremeAirDefense® Essentials

- Extends wireless security beyond rogue detection and mitigation to include wireless threat detection
- Visibility into 40+ wireless security threats
- Centralized view for all locations based on security threat score

ExtremeIoT™ Essentials

- Protects high-risk IoT devices
- Simplifies IoT on-boarding and security
- Enables floor staff to on-board and move IoT devices without involving network/IT

ExtremeLocation™ Essentials

- Wi-Fi and BLE based location services
- Current and historical location analytics
- Presence, Zone Tracking, Asset Tracking



ExtremeCloud™ IQ Essentials

The goal of any management solution is to provide the IT department with all the tools required to provide complete enterprise visibility, management, and control from a single platform. This avoids the challenges of having to integrate multiple applications, with multiple databases and often multiple interfaces. ExtremeCloud IQ is an industry-leading and visionary approach to cloud-driven network management, built from the ground up to take full advantage of Extreme's end-to-end networking solutions. ExtremeCloud IQ delivers unified, full-stack management of wireless access points, switches, and routers and enables onboarding, configuration, monitoring, troubleshooting, reporting, and more. ExtremeCloud IQ Essentials integrates four Enterprise Service Applications into its Pilot subscription license.

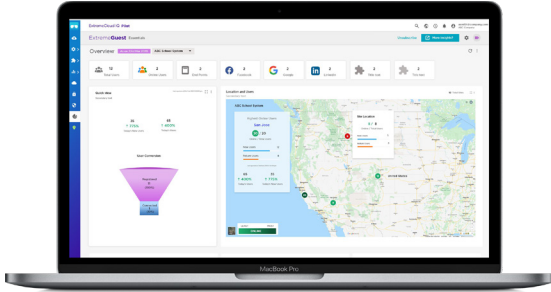
Product Overview

Enterprises have varied requirements and limited budgets, as a result only the most critical applications or services may be purchased, potentially sacrificing visibility into important network information due to budget constraints. ExtremeCloud IQ Essentials ends the decision making – any organization can now receive access to all enterprise network services without the complexity of integrating multiple applications, tying separate platforms, no additional licenses, no separate database and most importantly, with no additional cost.

ExtremeCloud IQ Essentials

ExtremeCloud IQ Essentials provides four key applications. WIPS, Location services, IoT, and Guest management, enabling organizations to take advantage of an all-in-one platform for wired and wireless management, business insights, location tracking, wireless security, seamless IoT onboarding and guest access, and guest access through a single user interface simplifying network management while infusing network and business insights.

Application capabilities include:



ExtremeGuest™ Essentials

Guest Wi-Fi access is crucial to improving guest, visitor, and shopper experiences in retail, hospitality, and at large event venues, among other locations.

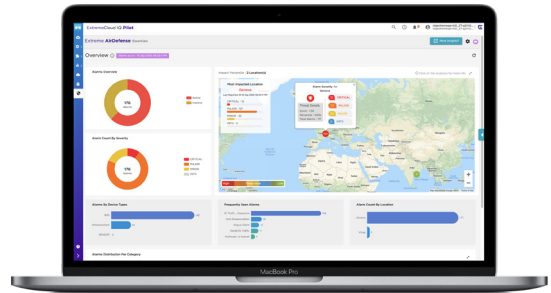
It has become a competitive necessity for organizations to not just provide network access, but to engage visitors with special offers and personalized incentives. In-store shoppers, for example, expect great Wi-Fi experiences to search product reviews and compare prices online. They want to share pictures with friends online before they decide on a product.

ExtremeGuest is a robust and comprehensive guest engagement solution that enables IT administrators to use analytical insights to engage visitors with personalized engagements. For retail it is about knowing how many customers enter the store and how long they stay, for education, what students are on campus and in class, and for public venues having the ability to customize splash pages to better engage with visitors. All providing improved engagements with visitors via analytics measured and reported through ExtremeGuest.



ExtremeLocation™ Essentials

Location services are crucial in helping enterprises locate their employees, students, guest users or high valued assets. Based on location insights, enterprises want to personalize customer engagement and enhance operational efficiencies. ExtremeLocation Essentials supports Wi-Fi and BLE technologies, and enterprises can monitor workflows and assets, the current activity or historically, to improve their overall operations and efficiency. ExtremeLocation provides zone-based location accuracy resolution to support diverse industry-specific use cases. For example, retailers can track new and repeat visitors, engagement times and associates or asset locations, to provide a contextual-based personalized experience to their customers. Healthcare providers may view real-time dashboards and monitor trends of users and assets, to deliver enhanced patient care.



ExtremeAirDefense® Essentials

Extreme AirDefense simplifies the protection, monitoring and security of your Wireless LAN networks. Extreme AirDefense continuously safeguards the network from external threats 24x7x365 and provides additional visibility into the air space.

ExtremeAirDefense Essentials is derived from AirDefense Enterprise which has been a premier WIPS solution in the industry for over 15 years. Essentials service will extend wireless security beyond rogue detection and mitigation to include wireless threat detection and provide global sensor management and visibility of 40+ wireless security threats

The ExtremeAirDefense Essentials system is deployed as a set of access points serving as sensors to monitor the airwaves together with this security application. Sensors can be deployed as either dedicated sensors or in radio-share mode. Dedicated sensors offer higher security through increased visibility. In a dual radio or tri-radio access point, one radio of the access point can be dedicated as a sensor, with the remaining radios serving user data traffic. In radio-share mode, the access point allocates a time slice for sensing function while utilizing the remaining time for serving data traffic. ExtremeAirDefense Essentials includes a dedicated dashboard to provide visibility across all locations from a wireless security perspective.

ExtremelIoT™ Essentials

As the number of connected IoT devices continues to rise, so does an organization's security risk. Typically designed without embedded security features, IoT devices can create new entry points to the network that can be exploited by malicious actors.

ExtremelIoT is a simple IoT security solution that is designed to protect high risk, wired IoT devices. Through the application of security profiles, it controls IoT device attachment and access to the network. It locks down

IoT communications to only what's authorized, blocking everything else. With user-friendly workflows for IoT profile assignment, once a profile has been created by the IT administrator, floor staff can apply the profiles so that they can on-board, move and track their IoT devices without burdening network/IT resources. ExtremelIoT is available as a self-contained solution available with the ExtremeCloud IQ Pilot license and the AP150W. ExtremelIoT enables effortless, secure IoT deployment for high value wired devices.

Service and Support

Extreme Networks provides comprehensive service offerings that range from Professional Services to design, deploy and optimize customer networks, customized technical training, to service and support tailored to individual customer needs. Please contact your Extreme Networks account executive for more information about Extreme Networks Service and Support.

Additional Information

For additional technical information on ExtremeCloud IQ and ExtremeCloud IQ Essentials, visit: extremenetworks.com/extremecloud-iq.



<http://www.extremenetworks.com/contact>

©2020 Extreme Networks, Inc. All rights reserved. Extreme Networks and the Extreme Networks logo are trademarks or registered trademarks of Extreme Networks, Inc. in the United States and/or other countries. All other names are the property of their respective owners. For additional information on Extreme Networks Trademarks please see <http://www.extremenetworks.com/company/legal/trademarks>. Specifications and product availability are subject to change without notice. 33154-1020-05